

# COMPANY PROFILE



# Elektroline Inc.

devices and technologies for TRAM, trolley-bus  
and railway tracks

## HISTORY

Elektroline is dynamically growing company with annual turnover of 22.5 millions EUR, the company employs more than 200 persons.

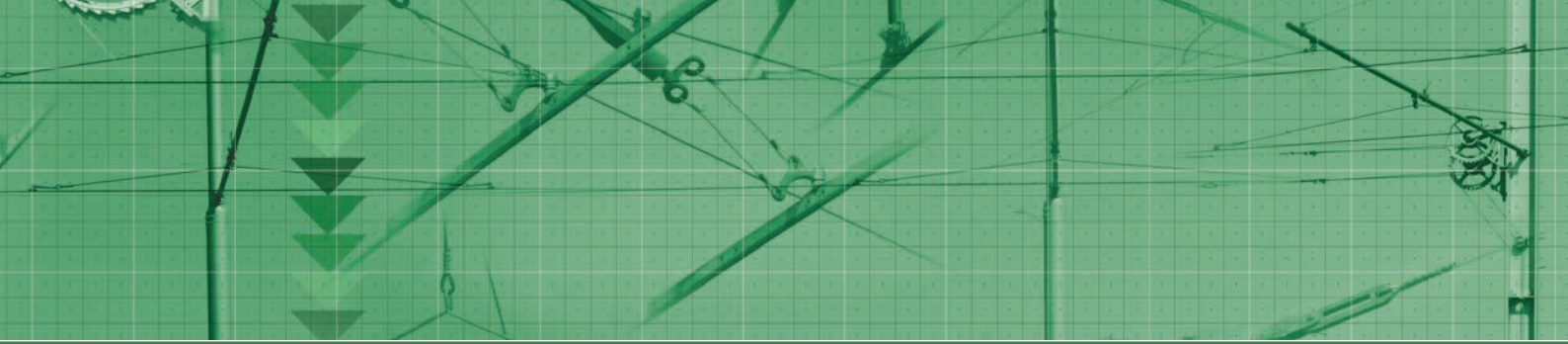
From 1995 our production programme includes also systems for remote controlling of switches, systems of controlling in depots, heating of switches, and other devices. In 2005 Elektroline changed its legal form to Inc. company.

The company Elektroline a.s. was founded in 1991 as Ltd. company. Elektroline a.s is engaged in area of production and deliveries for tram and trolleybus tracks, and carries out also installations of these materials.



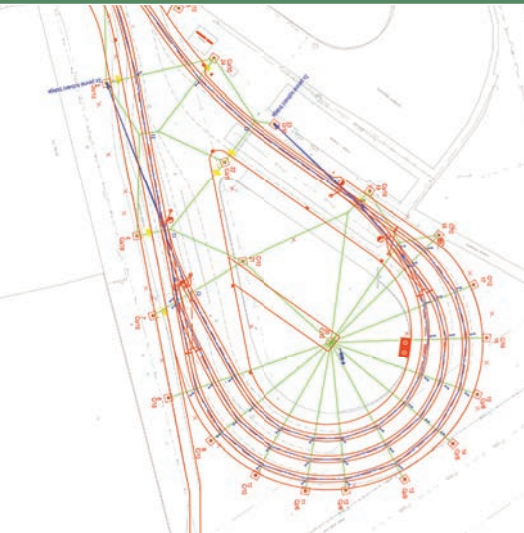
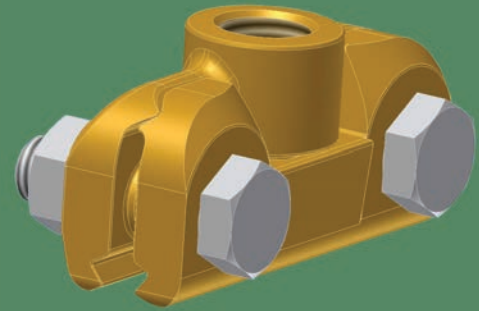
From 2005 Elektroline Company is a member of Alpiq InTec AG.

From 1999 our company is holder of the certificate ISO 9001:2000, from 2005 then also of the certificate ISO 14001:2004, one year after then we acquired also the certificate OHSAS 18001:1999.

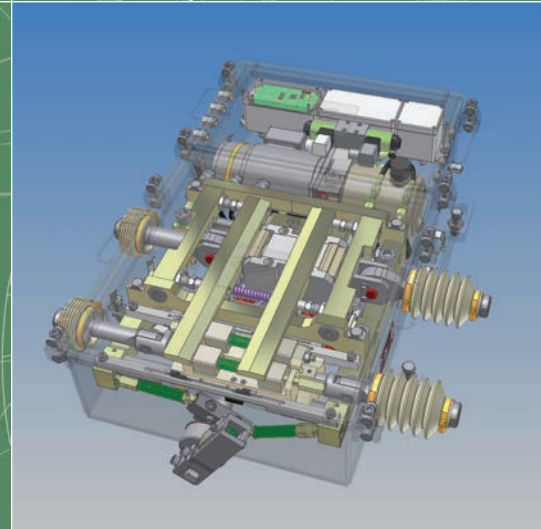


## DESIGNING

Our designers use for their work the most modern software and procedures.



Elektroline a.s. disposes of own designing capacity serving both for proposing of single new armatures and for planning of constructions in their whole.



# Elektroline Inc.

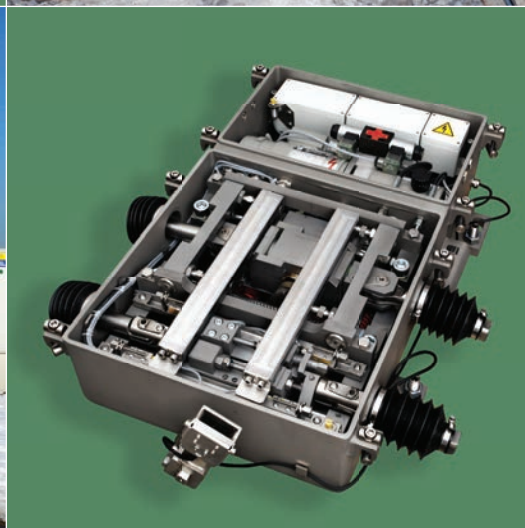
devices and technologies for TRAM, trolley-bus  
and railway tracks

## TRAM DEVICES

Automatic system of controlling and electric heating of switches, including possibility of remote control



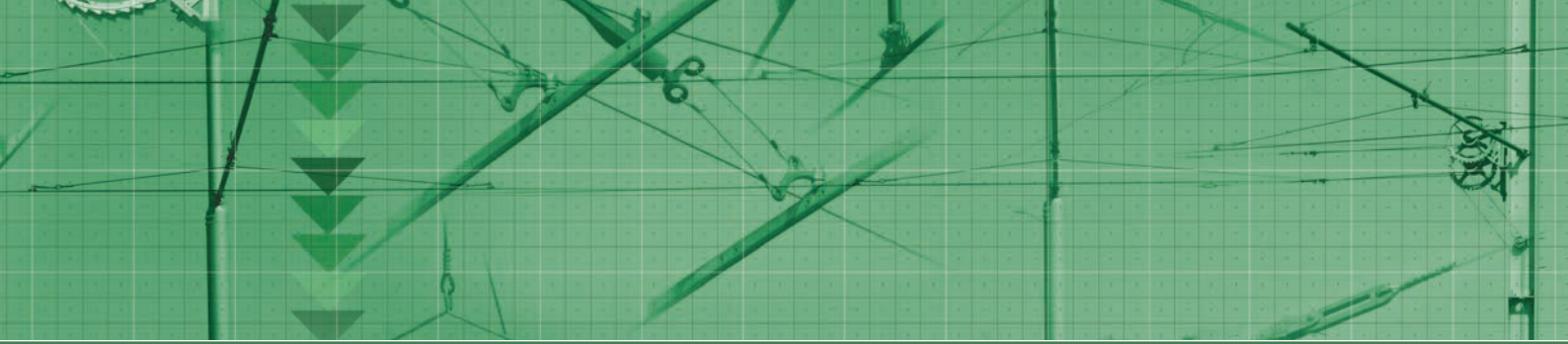
Our systems are characterized by a high degree of security and reliability. The system has been assessed according to SIL 3 (AK6) level of security



Offered switch point machines in connection with modern controlling unit guarantee a high security and comfort for operating staff



We deliver complete systems of automatic controlling and monitoring of tram itinerary in depots and within TRAM networks



Aesthetics is one of our main goals



Our installers have high qualification and they have experiences with installations abroad



Systems of compensation of contact wire tension are for aesthetic reasons hidden inside of the pole



We produce and deliver materials for various types of overhead contact lines and we cooperate with relevant installation companies



# Elektroline Inc.

devices and technologies for TRAM, trolley-bus  
and railway tracks

## ELEKTROLINE WORLDWIDE

We have realized our projects in more than 80 cities in 25 countries around the world.



### FRANCE

Bordeaux  
Lyon  
Montpellier



### NETHERLANDS



Amsterdam  
Arnhem  
Delft  
Rotterdam  
The Hague



### SWEDEN



Göteborg, Norrköping



Hradec Králové, Jihlava, Liberec, Olomouc,  
Opava, Ostrava, Pardubice, Pilsen, Prague,  
Stribro, Teplice, Usti nad Labem, Zlin



### CZECH REPUBLIC



### ITALY

Bari, Cagliari, Chieti,  
Florence, Lecce, La Spezia,  
Milan, Naples, Palermo



### GREECE

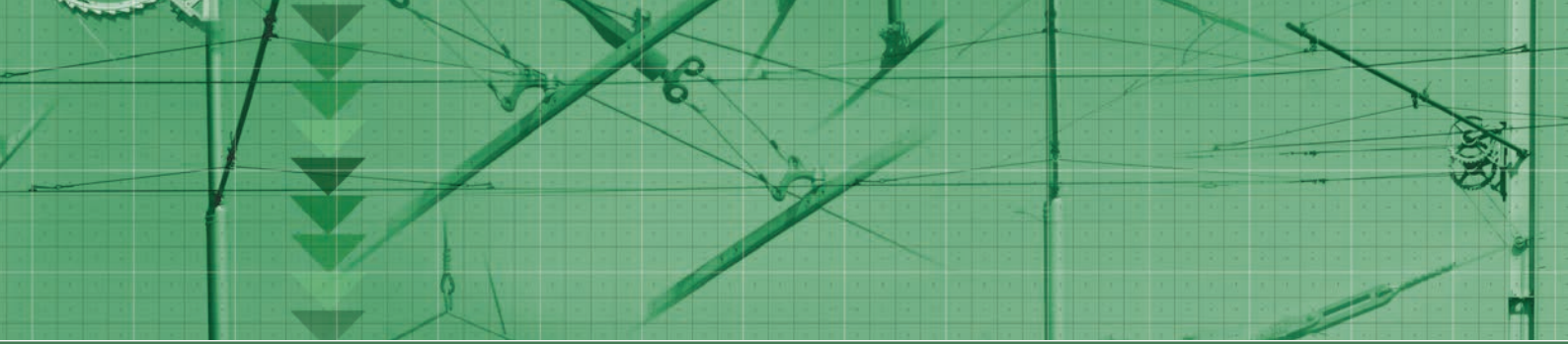
Athens



### USA

Dayton  
New Orleans  
Portland





**AUSTRALIA**



Adelaide  
Bendigo  
Gold Coast  
Melbourne



**HUNGARY**

Szeged



**POLAND**

Gdansk, Gdynia  
Krakow, Lublin  
Poznan, Warszawa



Gaziantep, Istanbul



**TURKEY**



**BULGARIA**

Sofia, Vidin



**AUSTRIA**



Salzburg

**OTHER REFERENCES:**

-  **BELGIUM** (Brussels, Ghent)
-  **CANADA** (Calgary)
-  **CHINA** (Suzhou)
-  **IRELAND** (Dublin)
-  **NORWAY** (The Bergen)
-  **ROMANIA** (Bucharest, Timisoara)
-  **RUSSIA** (Moscow, Vologda)
-  **SLOVAKIA** (Senec-Sladkovicovo)
-  **SPAIN** (Granada, Murcia, Tenerife)
-  **TUNISIA** (Tunis)



Blackpool



**GREAT BRITAIN**

## TROLLEY-BUS DEVICES

Fully automatic VETRA system of TBUS switches control provides high comfort for drivers



Proposed solutions of OCL are light, airy, and guarantee fast passage of vehicles



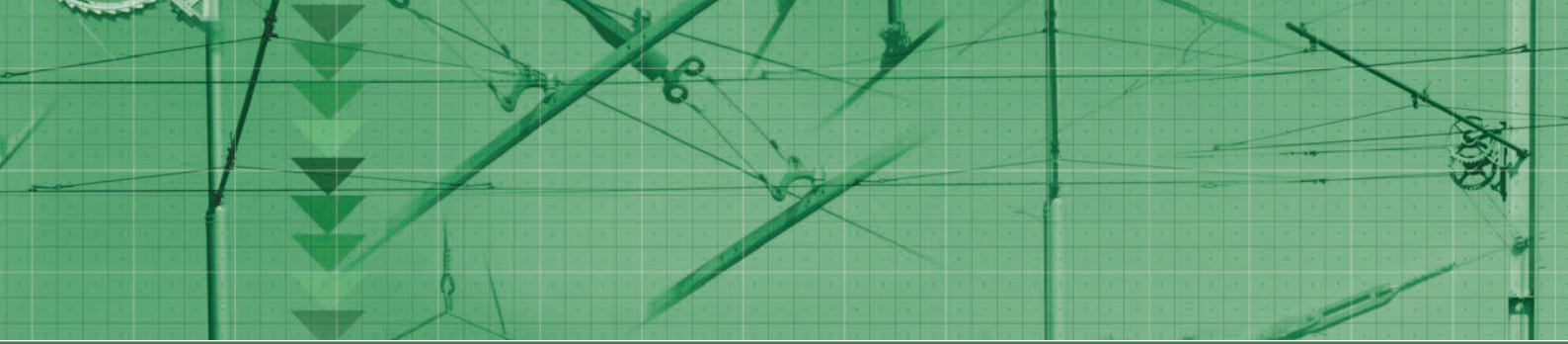
Technical solution of switches and crossings enables fast and smooth passage through cross-roads



Modern solutions of CW fixing use light and insulating materials and which assure perfect operating characteristics







Driver receives information about state and position of the switch through colour signaling lamp



▲  
A wide assortment of CW curve clamps satisfies high demands for fast and silent running



▲  
New type of TBxRAIL or TBxTRAM crossings without insulation is perfectly silent and provide vehicles uninterrupted passage with current



Crossings and switches are designed in such way to provide geometrical variability and easy assembly



# Elektroline Inc.

devices and technologies for TRAM, trolley-bus  
and railway tracks

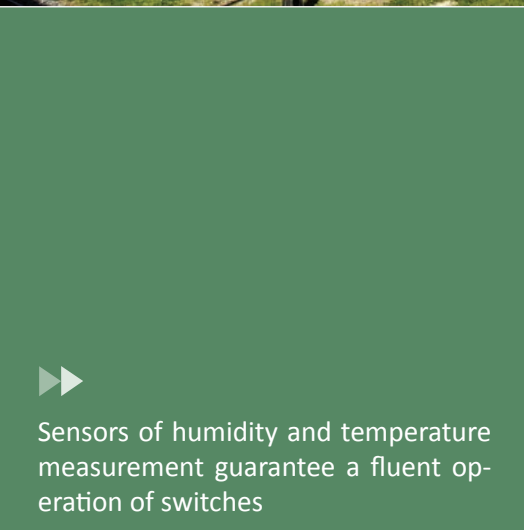
## RAILWAY DEVICES



Motor drives with remote control enable easy and operational management of OCL power supply

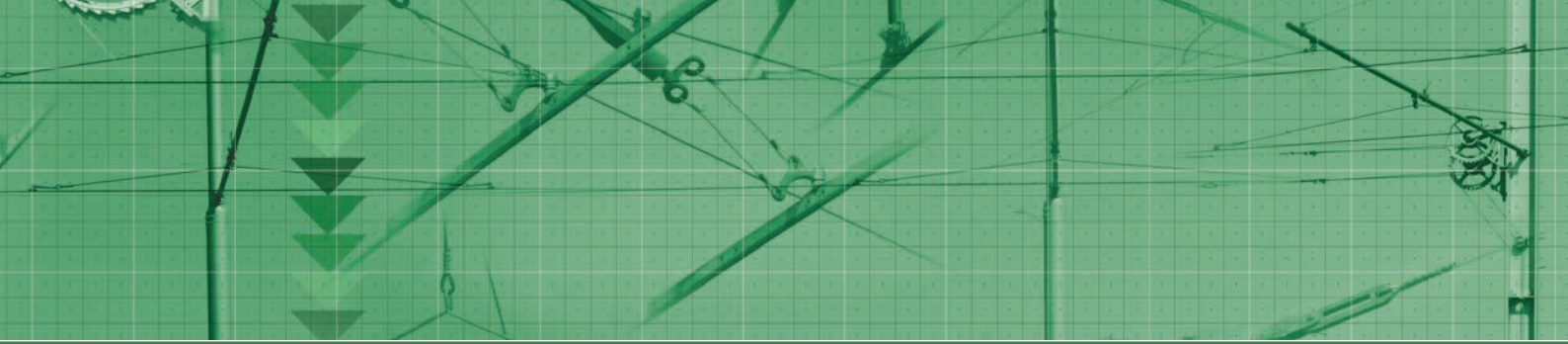


Our experts install complete sets of overhead contact lines in cooperation with K & M for high speed up to 300 km/h, made of classical, (or aluminium) materials



Sensors of humidity and temperature measurement guarantee a fluent operation of switches





System of automatic heating of switches guarantee operation in winter periods and inform operators about actual state of switch



Automatic remote illumination of station lighting enables an economical lighting mode also in railway stations without staff presence



Power heating rods are integrated with a complete variable system of fixing elements for various shapes and lengths of switch tongues



**Elektroline Inc.**  
**K Ládví 20**  
**184 00 Prague 8**  
**Czech Republic**  
**phone: +420 284 021 111**  
**fax: +420 284 021 119**  
**e-mail: info@elektroline.cz**  
**www.elektroline.cz**

